

CARATTERISTICHE TECNICHE

ordito trama	poliester 1000 Dtex poliester 1000 Dtex
	PVC
ordito trama	8 fili/cm 8 fili/cm
	ca 650 gr/mq
	laccato lucido su due lati
	cl. 2 secondo norme R.F. 1/75 3/77

Filato

Spalmatura

Costruzione

Peso del tessuto

Finissaggio

Ignifugazione

RESISTENZA

ordito trama	ca 250 DaN/ 5 cm ca 250 DaN/ 5 cm
ordito trama	ca 30 DaN ca 30 DaN
	ca 9 DaN/5cm
	+ 70° / - 30°

Resistenza
alla trazione
(DIN 53354)

Resistenza
allo strappo
(DIN 53363)

Aderenza
(IVK/PKT 14)

Resistenza
alle temperature

DISPONIBILITA'

	standard
	colore bianco cm 250 anche cm 300 a richiesta cm 218
	60 mtl

Fornitura

Altezza
del tessuto

Lunghezza
del rotolo

I suddetti valori sono suscettibili
di tolleranza del +0 /- 5%
e possono subire mutamenti nel tempo.

Dati aggiornati al febbraio 2009.

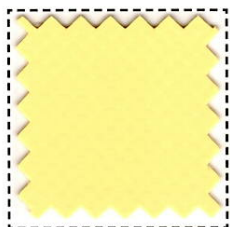
Q
U
E
S
T
I
P
E
T
R
A
E
C
O
S
T
R
U
C
T
I
V
E



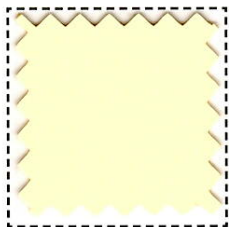
Colori



Bianco 112
cm 218/250/300



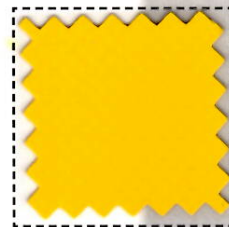
Crema 205
cm 250



Avorio 226
cm 250



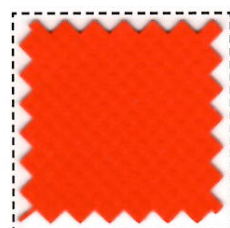
Crema 234
cm 250



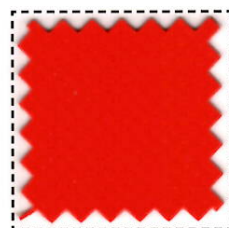
Giallo chiaro 221
cm 250



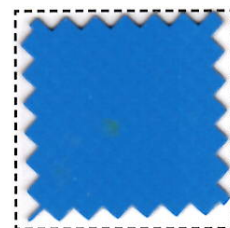
Giallo 218
cm 250



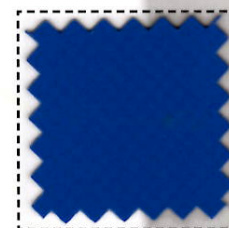
Arancio 306
cm 250 a richiesta 218



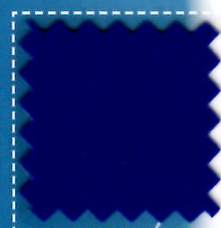
Rosso 447
cm 250



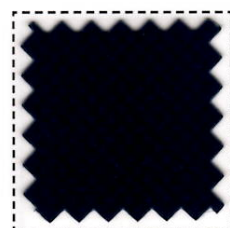
Azzurro 525
cm 250



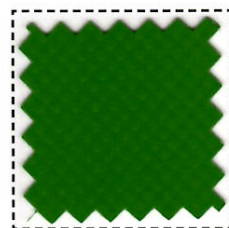
Blu 539
cm 250



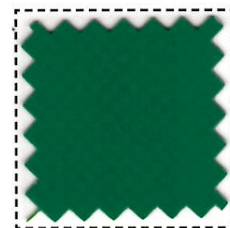
Blu 500
cm 250



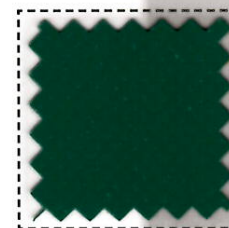
Blu 513
cm 250



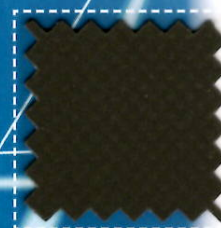
Verde chiaro 626
cm 250



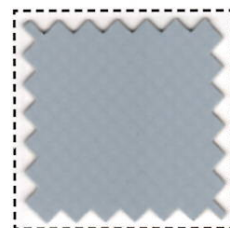
Verde 661
cm 250



Verde scuro 601
cm 250



Verde militare 618
cm 250



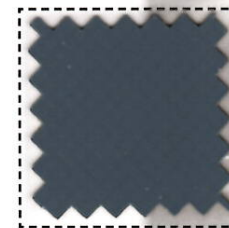
Grigio chiaro 824
cm 250



Grigio 802
cm 250



Grigio 801
cm 250



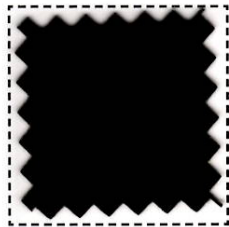
Grigio 807
cm 250



Grigio 831
cm 250



Argento 898
cm 250



Nero 904
cm 250